



KAIZEN RECORD SHEET

Kaizen Category

- Easy to CLIT, Adjust, Operate, Monitor
- Stoppage elimination or Increasing MTBF
- Elimination of Minor stoppages
- Changeover / MTTR
- Customer Complaint Elimination
- Inhouse Rejection / Rework Elimination
- Energy Saving
- Waste Elimination / Yield Improvement
- Pokayoke
- Increase in Speed
- Environment
- Elimination of Unsafe Conditions
- Others

Team Members:
Muna Gawda

Dept. : DIP (Mechanical)

Sheet No. (Will be filled by)

Approved By: K Sekar

Tick Only One

Kaizen Theme :

Location DIP HOT ZONE	Major equipment Group SPINNING MACHINES	Equipment ELECTRICAL SENSORS	Problem Related To
---------------------------------	---------------------------------------------------	----------------------------------------	--------------------

Problem / Before Status :

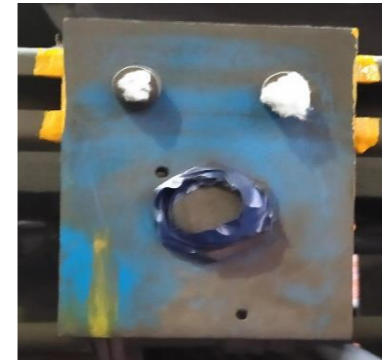
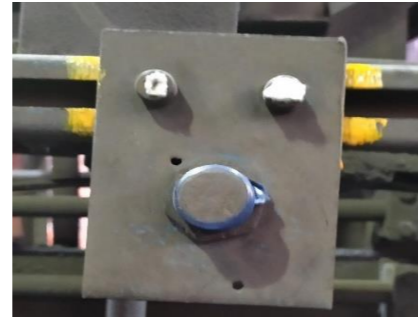
(Use sketch)



The sensors and the magnets in spinning machines play an important role as any dislocation of one will lead to a machine failure. At times the sensors had to be removed for maintenance but if not fitted at their correct location this will lead to failure in machine operation.

Countermeasure / After Status :

(Use sketch)



From electrical department welder Muna Gawda suggested to paint the edges of the sensors plates so this will act as a match mark . Any time the plate gets dislocated it can be detected and rectified. He painted the edges of the sensors in one machine. The idea was good and adopted as an One Point Lesson.

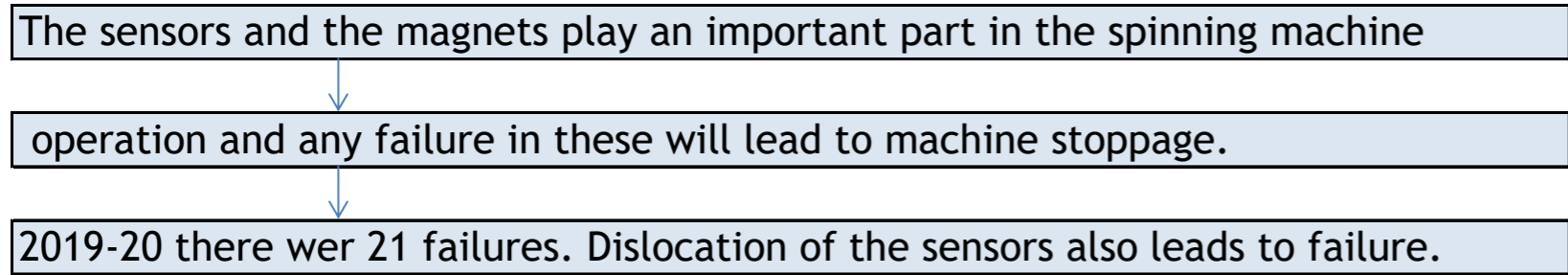
Benchmark Value :	NA
Target Value :	Na
Kaizen Start Date :	25th Dec 2020
Kaizen Finish Date :	25th Dec2020

Results :
[Before (Data) / After (Data)]
Now each sensor plate has a location. Any displacement will be noticed and corrected,
If opened fro any reason it will be fitted back in the same place.

Benefits: (In term of PQCDSM or Rs.)
Made work much simpler and foolproof.

Analysis :

(Step by step kaizens, why why or FTA or any analysis tool)



Scope & plan for Horizontal Deployment			
Equipment	Target Date	Responsibility	Status
All SPM	15-01-2021	Electrical Department	Progress